



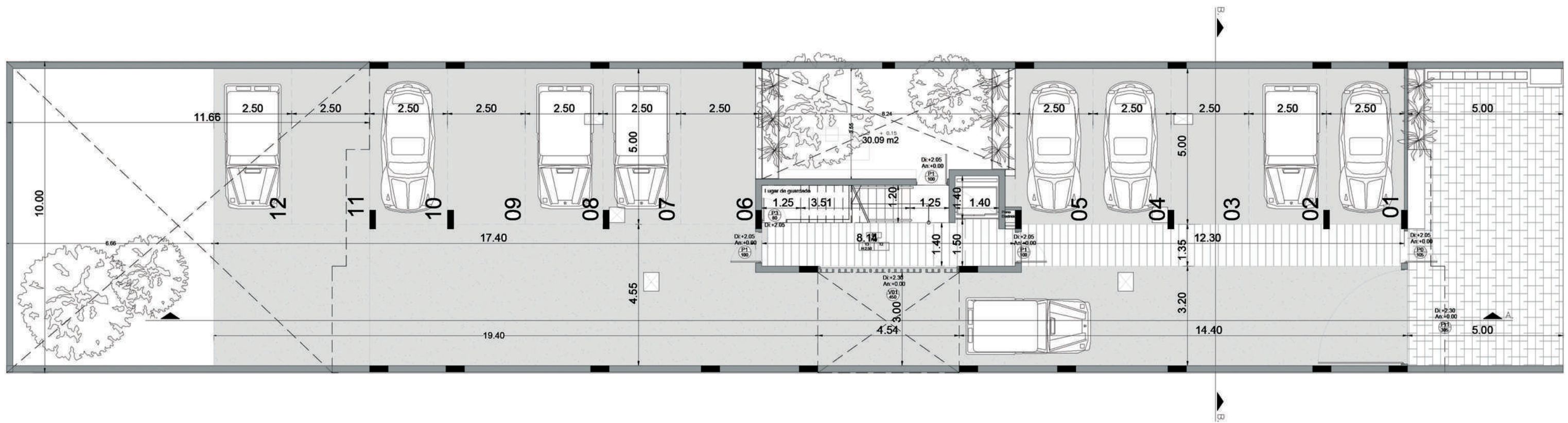
# Edificio Saenz Peña 1

ubicación: Calle R. Saenz Peña  
estatus: Proyecto  
año: 2022  
programa: Vivienda colectiva

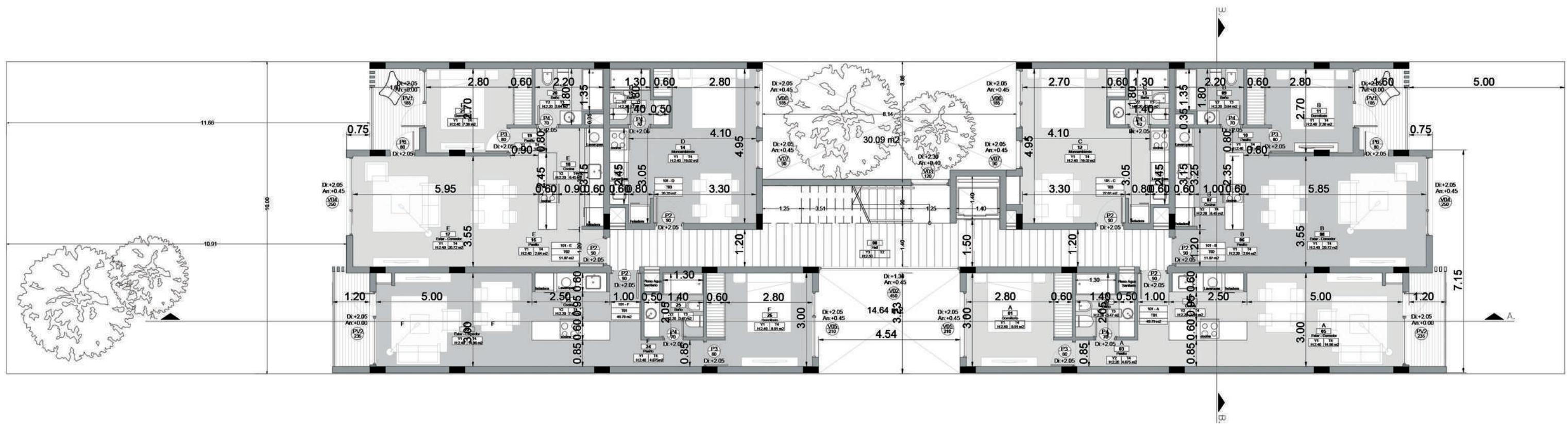
NC: 19-2-E-243-09  
superficie de terreno: 500 m2  
proyectista: Fabiela A. Orlandi  
Mat. CARN 1432/3





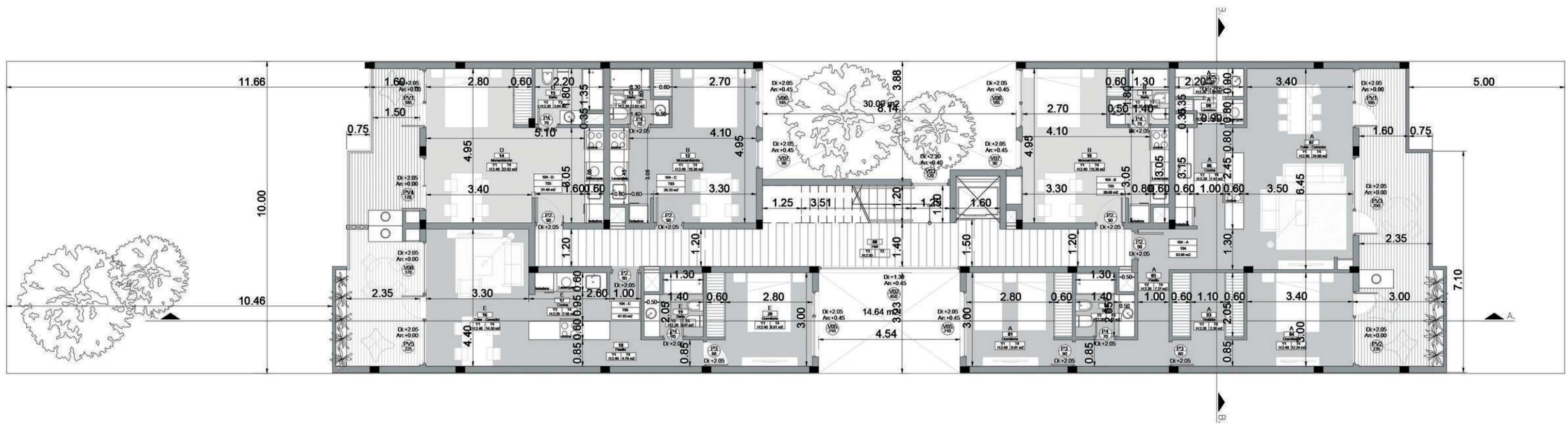


Planta Baja - Escala 1.125

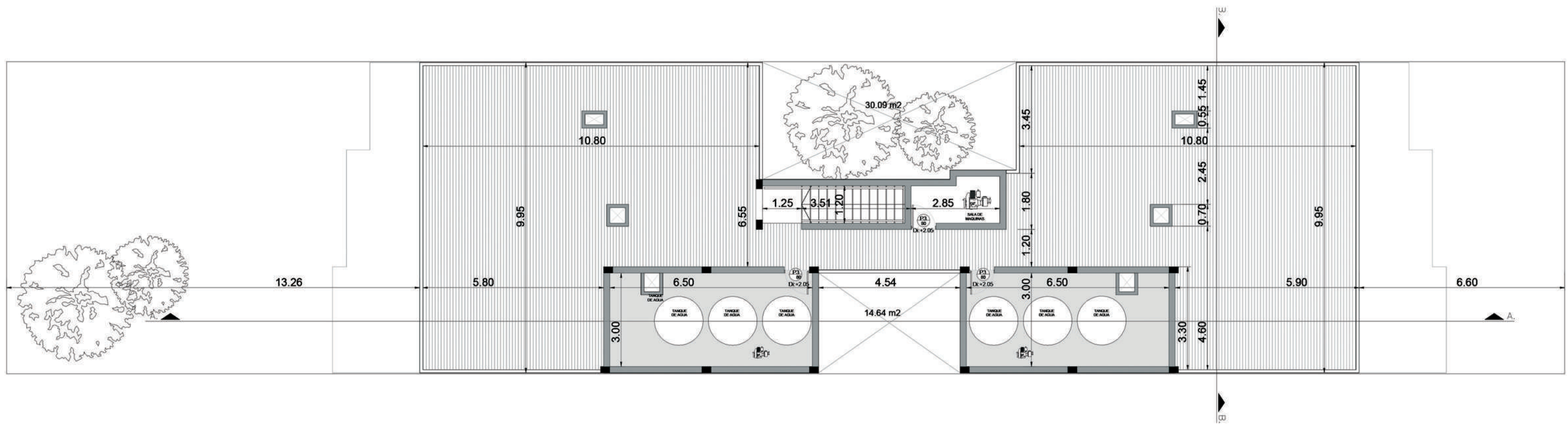


Primer, segundo y tercer nivel - Escala 1.125

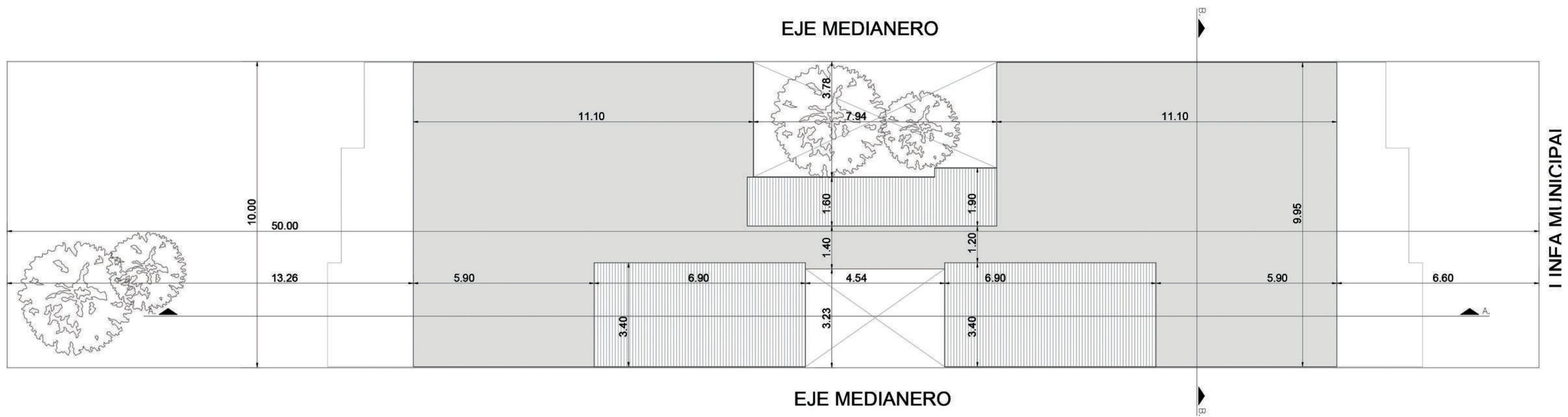




Cuarto nivel - Escala 1.125

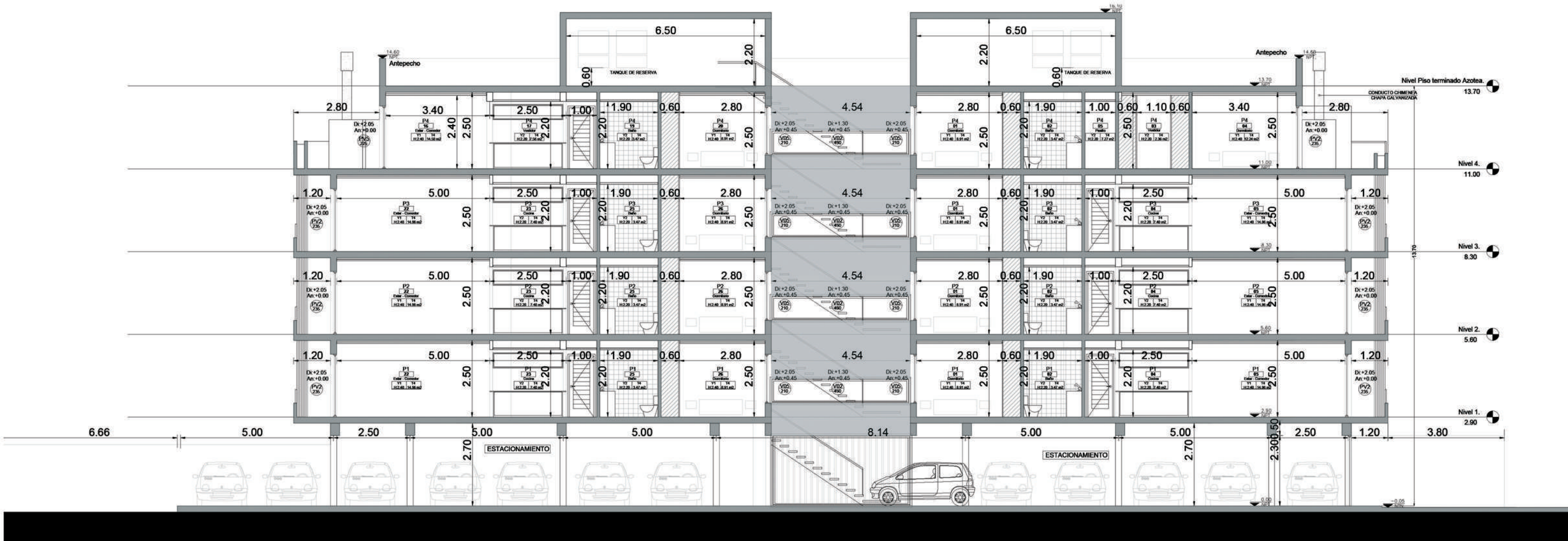


Terraza - Escala 1.125



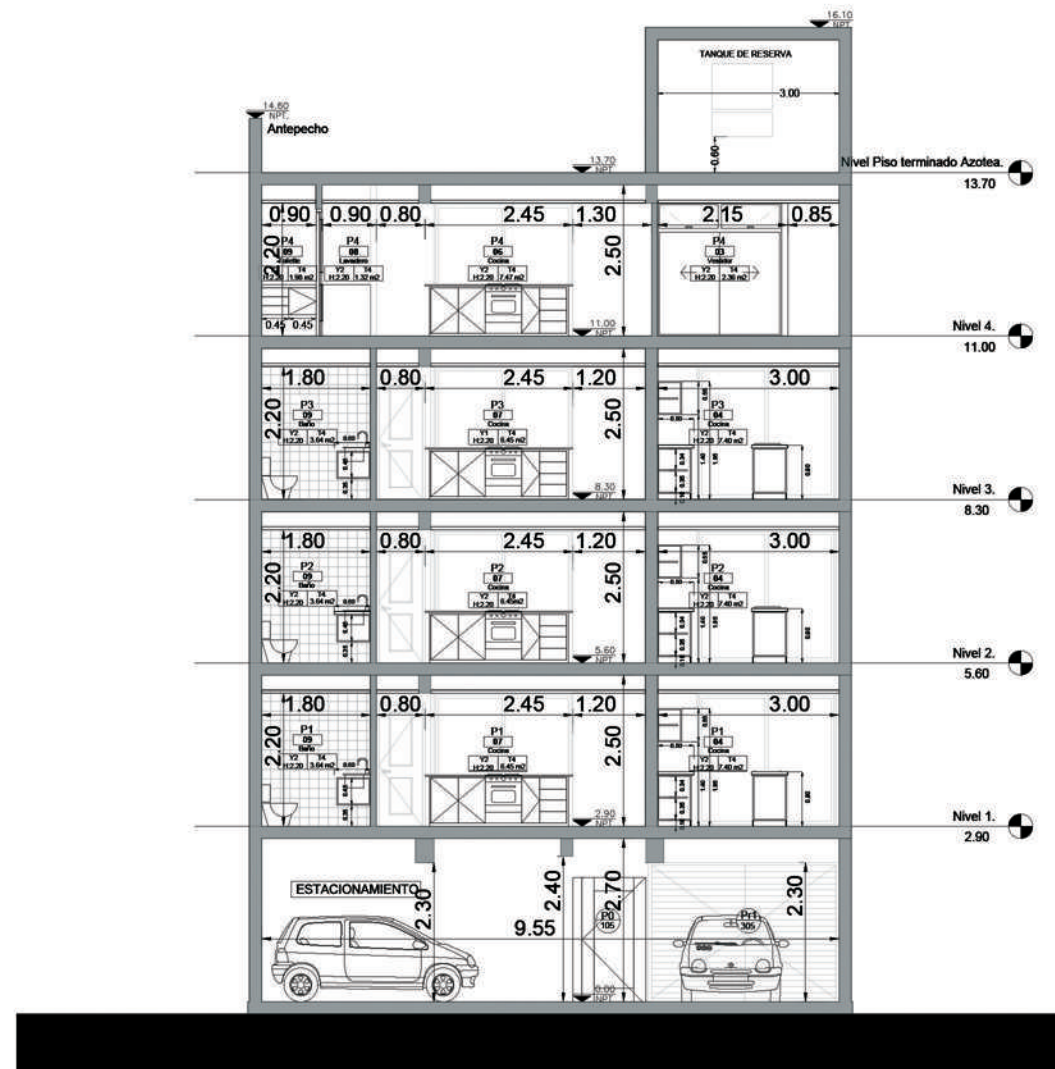
Planta de techos - Escala 1:125





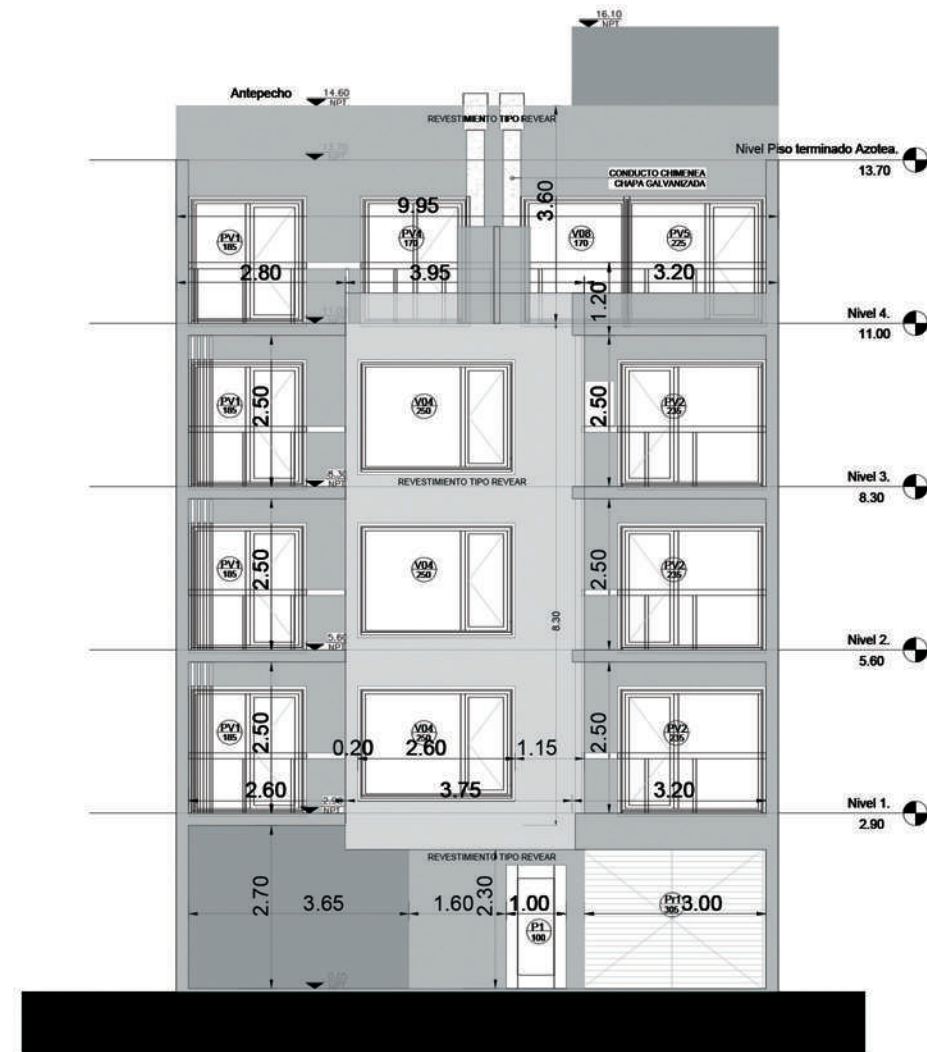
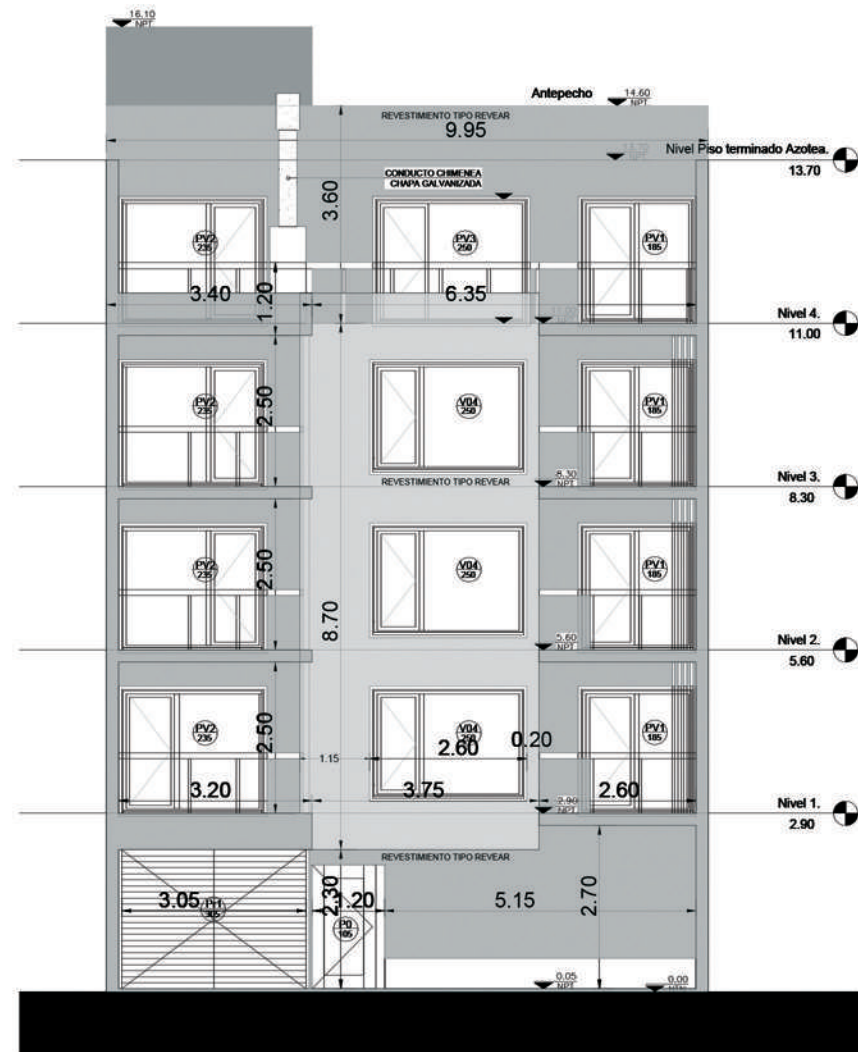
Corte A-A - Escala 1.125





Corte B-B - Escala 1.125



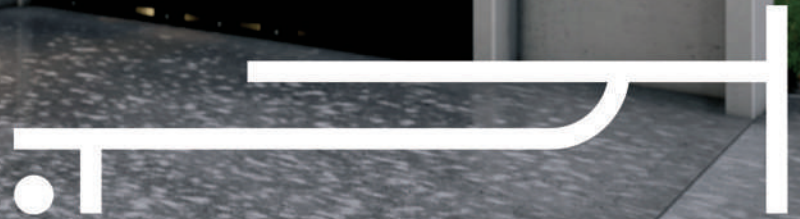


Vista frente y contrafrente - Escala 1:125











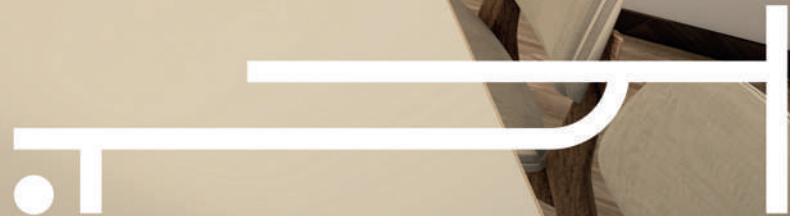




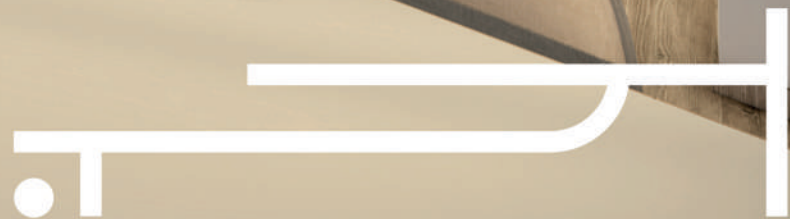


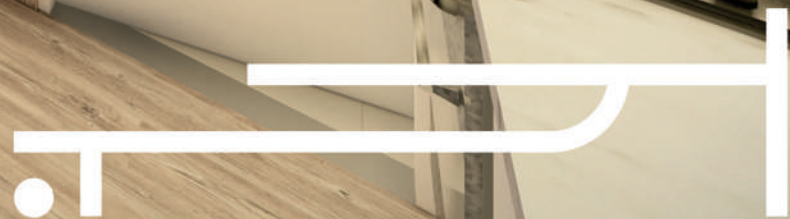
















arquitectura  
territorio  
gestión

orlandi  
arq. 

orlandiarq.com  
+54 294 4587517  
estudio@orlandiarq.com